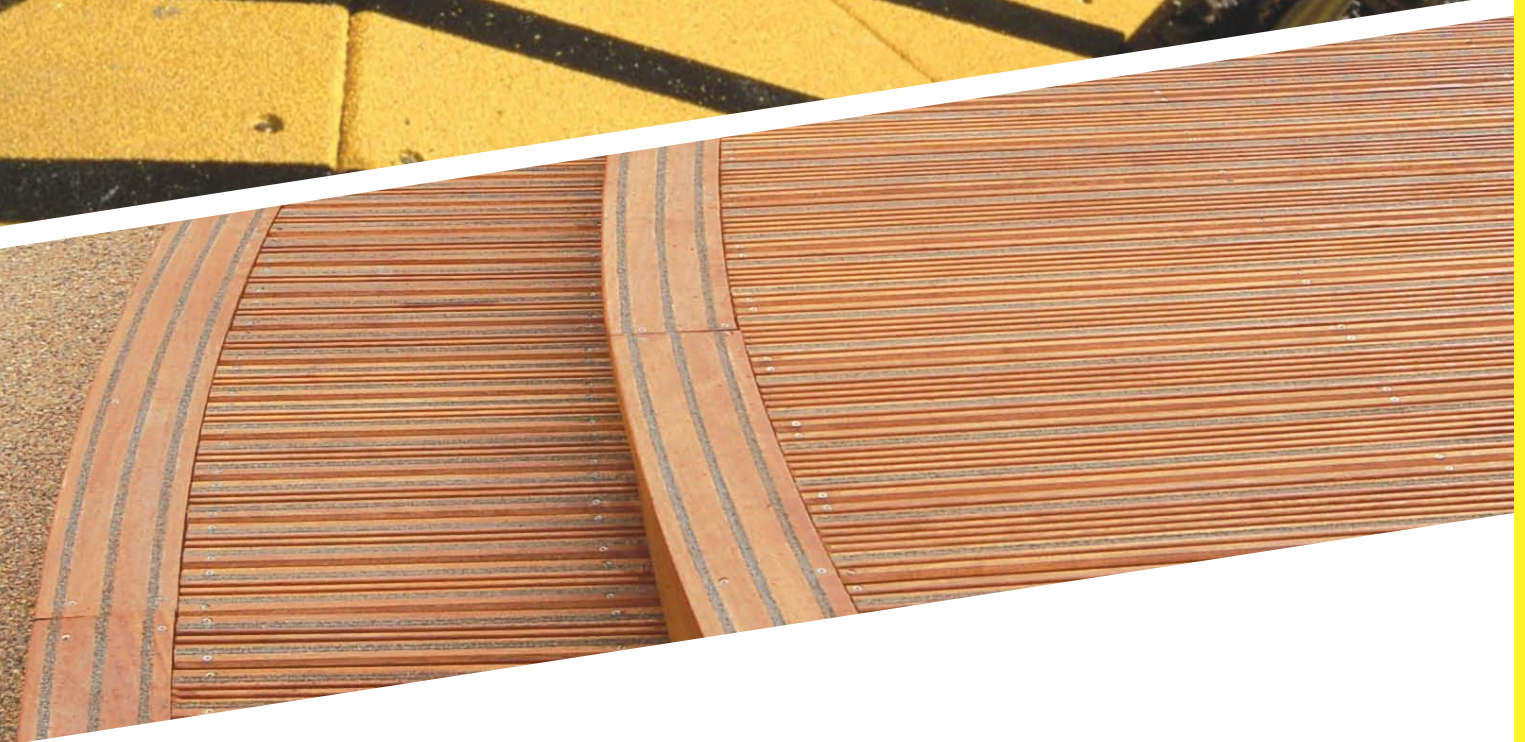
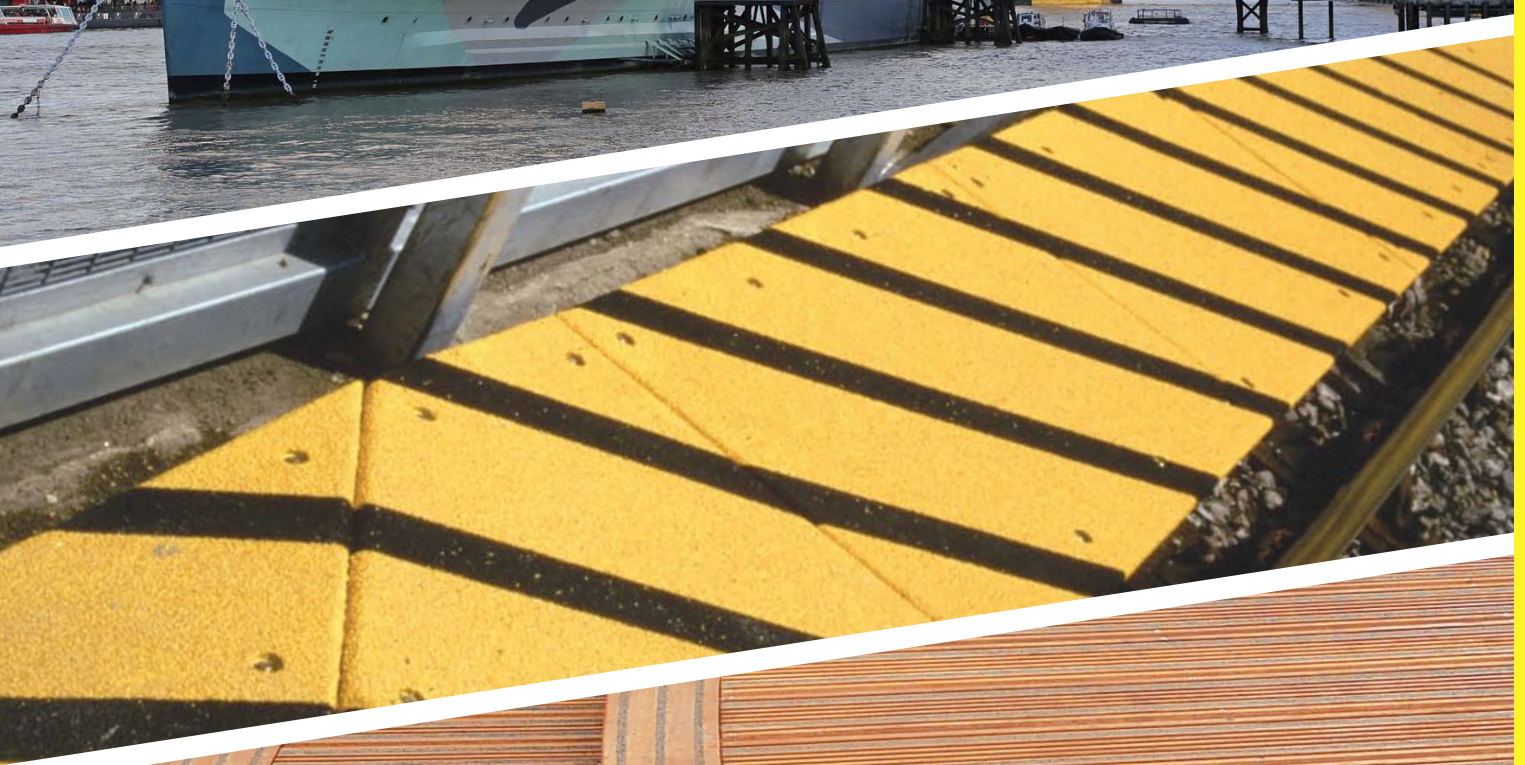


MADE IN  
BRITAIN



**GD** GripDeck®  
Safety Underfoot



HEAVY DUTY ANTI-SLIP INSERT

ROUTED CHANNEL INSERT

TIMBER OR CONCRETE

5 YEAR WARRANTY

**StadiaStrip** is a heavy duty anti-slip, retro fit insert designed to add a robust anti-slip surface to timber or concrete. Available in two standard widths; 12mm or 23mm, StadiaStrip requires a channel to be routed during the installation process.

## STADIASTRIP



- HEAVY DUTY ANTI-SLIP INSERT
- SUITABLE FOR CONCRETE OR TIMBER INSERTS
- MADE IN GREAT BRITAIN
- SURPASSED BRITISH SAFETY STANDARDS
- DOMESTIC OR COMMERCIAL USE
- CHANNEL REQUIRED TO INSTALL
- 5 YEAR WARRANTY AS STANDARD
- 20+ YEAR LIFE EXPECTANCY



## EASY TO INSTALL IN 6 SIMPLE STEPS



1. Rout out a channel to fit your StadiaStrip
2. Clean and dry the receiving surface
3. Pump in a generous line of adhesive
4. Drop in and push down your StadiaStrip into the channel
5. Screw down if extra fixing required
6. Leave to set for 24 hours before walking on surface



# Why choose GripDeck®?

---



**SAFETY**  
UNDERFOOT

**GD GripDeck®**

---

**GD GripDeck®**

Safety Underfoot


GripDeck Ltd. (Head Office)  
Unit 1, Chancers Farm  
Fossetts Lane  
Colchester, Essex  
United Kingdom  
CO6 3NY

Tel: 01206 242494

Fax: 01206 242496

Email: [mail@gripdeck.co.uk](mailto:mail@gripdeck.co.uk)

[www.gripdeck.co.uk](http://www.gripdeck.co.uk)

 GripDeck

